



WILSHEA

From Africa's Heart to the
World's Beauty Shelves

*Sustainable Beauty,
From Multi-Plant Origins*

**wilmar**

A Journey of Shea, Shared with the World

Our journey begins in the heart of Africa, where shea nuts are handpicked and gently crushed into crude shea, preserving their natural richness and nourishing qualities. From there, the crude shea is processed at our specialized facilities into different **WILSHEA** grades. Every stage is designed to retain shea's inherent properties, allowing it to shine in innovative beauty applications.

WILSHEA is a premium natural emollient, composed of a synergistic blend of triglycerides and triterpene esters. This composition delivers exceptional oxidative stability and a smooth, consistent texture that ensures lasting performance and freshness. Building on this foundation, **WILSHEA** expands to reach formulators across the globe.

Guided by Wilmar's commitment to sustainability, **WILSHEA** is sourced and refined with respect for both people and planet. As an active member of the **Global Shea Alliance (GSA)**, we promote responsible sourcing and ethical practices throughout the shea supply chain. This commitment reflects our dedication to community development while ensuring the consistent quality trusted by beauty and personal care brands.

In every step of its journey, **WILSHEA** carries the soul of Africa onto the world's stage, transforming nature's gift into moments of beauty everywhere.



Shea Processing Flow Chart

RAW MATERIAL

Shea Kernels

PRODUCTION PROCESS

Crushing & Extraction

FINISHED PRODUCTS

Crude Shea Butter

De-Oiled Shea Cake



RAW MATERIAL

Crude Shea Butter

PRODUCTION PROCESS

Stripping Plant

FINISHED PRODUCTS

Stripped Shea Butter

Shea Fatty Acid Distillate



RAW MATERIAL

Crude Shea Butter
Stripped Shea Butter

PRODUCTION PROCESS

Fractionation Plant

FINISHED PRODUCTS

Crude Shea Stearin

Crude Shea Olein

Shea Latex



The Power Within Shea



Skin Barrier Support

Reinforces the skin's natural lipid barrier



Moisturizing and Conditioning

Prevents Trans Epidermal Water Loss (TEWL), locking in moisture for softer skin



Anti-Inflammatory

Calms irritation and redness



Antioxidant and Antipollution

Shields the skin against environmental stressors



WILSHEA for Your Every Beauty Need

From solid butters to liquid and derivative formats, the **WILSHEA** range offers versatile solutions tailored for every beauty formulation. Each grade is designed to deliver consistent quality and performance, empowering formulators to bring nature's gift into products across skincare, haircare, and cosmetics.

Trade Name	Appearance	Unsaponifiable Content (%)	Slip Melting Point (°C)	Shelf Life (years)	Application
WILSHEA ORIGINAL	Off-White Solid	6-8	36-38	1	Excellent skin conditioning agent. Melts at body temperature for good spreadability.
WILSHEA FIRM	Off-White Solid	5-6	42-46	2	Superior crystallization properties. Optimized for stick formulations such as sun sticks and solid makeup applications.
WILSHEA PRIME	Off-White Solid	6-8	31-38	2	Superior crystallization properties. Melts at body temperature for good spreadability. Ideal for solid formulations.
WILSHEA SOFT	Slightly Yellow, Cloudy Liquid	6-8	10-16	2	Fluid pumpable format, designed to excel in low viscosity systems.
WILFARIN FA-1895 (S)	Fine Powdered White Solid	-	-	2	Multifunctional ingredient offering self-emulsifying and co-emulsifying power.



WILSHEA Original

INCI: *Butyrospermum Parkii (Shea) Butter*

Naturally derived, **WILSHEA Original** is a refined, bleached and deodorized solid shea butter that delivers excellent skin conditioning performance. Melting at body temperature, it provides smooth application and superior spread ability, making it highly suitable for a wide range of personal care formulations.

WILSHEA Original offers a balance of stability, sensorial experience, and skin comfort.

Specifications



Appearance

Off-white solid



Unsaponifiable Content

6-8%



Slip Melting Point

36-38°C



Shelf Life

1 year

Formulation Highlight

Enriching Shea Butter Moisturising Body Lotion

INGREDIENTS

TRADE NAME, Chemical Name	Formulation (%)	Function
Part A		
1. Water	qs	Solvent
2. WILFARIN USP-997 , Glycerin	3.00	Humectant
3. Carbomer	0.35	Thickener
Part B		
4. ERCAMULS LUX , Cetearyl Alcohol (and) Glyceryl Stearate (and) PEG-40 Stearate (and) Cetareth-20	3.00	Emulsifier
5. ERCAWAX GMS , Glyceryl Stearate	1.50	Giving Factor
6. WILSHEA ORIGINAL , Butyrospermum Parkii (Shea) Butter	10.00	Emollient
7. WILFARESTER MCT , Caprylic/Capric Triglycerides	5.00	
Part C		
8. 20% Sodium Hydroxide	0.56	pH Adjuster
9. Preservative	0.20	Preservative

Appearance: White opaque cream

pH: 6.0 - 6.5

Viscosity: 10,000 – 15,000 mPa·s
(10rpm, RV-7)

Stability: 50°C (1 month), 40°C
(3 months), RTP – STABLE

BEAUTY RECIPE

1. Sprinkle carbomer in water with glycerin and let it swell. Mix until all powders are dispersed.
2. Combine all ingredients in Part B.
3. Heat Part B to 80°C.
4. Heat Part A to 80°C.
5. Add Part B to Part A with continuous mixing.
6. Cool down with mixing. Then add the ingredients in Part C. Mix until the batch is homogenous.
7. Check the pH.

WILSHEA Firm

INCI: *Butyrospermum Parkii (Shea) Butter*

WILSHEA Firm is a semi-solid shea butter optimized for stick formulations such as sun sticks and solid makeup applications. With its higher slip melting point of 42-46°C, **WILSHEA Firm** gives sticks the structure they need to stay firm at room temperature, yet melt smoothly when applied to the skin.

This balance of firmness and smooth glide makes **WILSHEA Firm** a dependable option for both personal care and color cosmetic products, offering excellent slip, smoothness, and formulation stability over time.

Specifications



Appearance

Off-white solid



Unsaponifiable Content

5-6%



Slip Melting Point

42-46 °C



Shelf Life

2 years

Formulation Highlight

Pure Colour Kiss Lipstick

INGREDIENTS

TRADE NAME, Chemical Name	Formulation (%)	Function
1. WILFARESTER MCT , Caprylic/Capric Triglycerides	22.00	Emollient
2. ERCAREL DOE , Dicaprylyl Ether	15.00	
3. WILSILK SMOOTH , C9-12 Alkane (and) Tridecane	2.00	
4. Rice Bran Wax	15.00	Thickener
5. ERCAREL MM , Myristyl Myristate	3.00	Emollient
6. ERCAREL G20 , Octadodecanol	10.00	
7. WILSHEA FIRM , Butyrospermum Parkii (Shea) Butter	5.00	
8. WILSILK CS-110 , Hydrogenated Soy Polyglycerides (and) C15-23 Alkane	8.00	
9. ERCAGREEN 40 , Polyglyceryl 4 Oleate	5.00	Emulsifier
10. Pigment	15.00	Colour

Appearance: Pigmented Stick

Stability: 50°C (1 month), 40°C (3 months), RTP, Freeze-thaw (3 cycle)

BEAUTY RECIPE

1. Weigh all the ingredients and heat to 80°C.
2. Once all the solid ingredients are melted. Mix the batch until homogenous.
3. Pour the batch into the lipstick mold and let it set for a few hours.



WILSHEA Prime

INCI: *Butyrospermum Parkii* (Shea) Butter

WILSHEA Prime is a solid shea butter distinguished by its improved crystallization properties and superior stability, giving it a creamy, semi-solid texture that resists graininess over time. This makes it an ideal ingredient for solid and semi-solid formulations where smooth texture, consistency, and extended shelf life are essential.

Derived from natural shea butter, **WILSHEA Prime** offers dependable performance across a wide range of personal care applications.

Specifications



Appearance

Off-white solid



Unsaponifiable Content

6-8%



Slip Melting Point

31-38°C



Shelf Life

2 years

Performance You Can Feel

Designed for smoothness and glide, **WILSHEA Prime** outperforms conventional standard shea butter in sensory evaluation. It provides better slip, less tackiness, and an overall skin feel that panelists preferred for its comfort and balance.



WILSHEA Prime

Formulation Highlight Body Butter

INGREDIENTS

TRADE NAME, Chemical Name	Formulation (%)	Function
Part A		
1. Deionized Water	qs	Solvent
2. WILFARIN USP-997 , Glycerin	3.00	Humectant
3. Carbomer	0.30	Thickener
Part B		
4. ERCAMULS NF , Cetearyl Alcohol (and) Polysorbate 60	3.00	Emulsifier
5. ERCAWAX GMS , Glyceryl Stearate	1.50	Co-emulsifier
7. WILSHEA PRIME , Butyrospermum Parkii (Shea) Butter	25.00	Emollient
8. WILFARESTER MCT , Caprylic/Capric Triglycerides	5.00	
Part C		
12. 20% Sodium Hydroxide	0.50	pH Adjuster
13. Preservative	0.50	Preservative

Appearance: White opaque cream

pH: 6.0 - 6.5

Viscosity: 90,000 - 100,000 mPa · s (10rpm, RV-6)

Stability: 50°C (1 month), 40°C (3 months), RTP – STABLE

BEAUTY RECIPE

1. Sprinkle carbomer in water with glycerin and let it swell. Mix Part A until all powders are dispersed and dissolved in water.
2. Combine all ingredients in Part B.
3. Heat Part B to 80°C.
4. Heat Part A to 80°C.
5. Add Part B to Part A with continuous mixing.
6. Cool down with mixing. Then add the ingredients in Part C. Mix until the batch is homogenous.
7. Check the pH.



WILSHEA Soft

INCI: *Butyrospermum Parkii* (Shea) Butter

WILSHEA Soft is a fluid form of shea butter designed for use at higher concentration levels than standard refined shea, without the risk of crystallization. With a low slip melting point of 10-16°C, it reduces energy usage, accelerates production, and ensures smooth, efficient processing.

Its pumpable, fluid format allows for effortless incorporation into low viscosity and transparent formulations, making **WILSHEA Soft** an ideal choice for manufacturers seeking reliability, efficiency, and optimal processability.

Specifications



Appearance

Slightly yellow, cloudy liquid



Unsaponifiable Content

6-8%



Slip Melting Point

10-16°C



Shelf Life

2 years

Formulation Highlight

Revive Moisture Leave-on Hair Oil

INGREDIENTS

TRADE NAME, Chemical Name	Formulation (%)	Function
Part A		
1. WILSILK VELVET, C9-12 Alkane	qs	Emollient
2. ERCAREL DIC, Dicaprylyl Carbonate	5.00	Humectant
3. WILSHEA SOFT, Butyrospermum Parkii (Shea) Butter	3.00	Emollient

Appearance: Clear Liquid

Stability: 50°C (1 month), 40°C (3 months), RTP – STABLE

BEAUTY RECIPE

1. Combine all ingredients and mix until homogeneous.

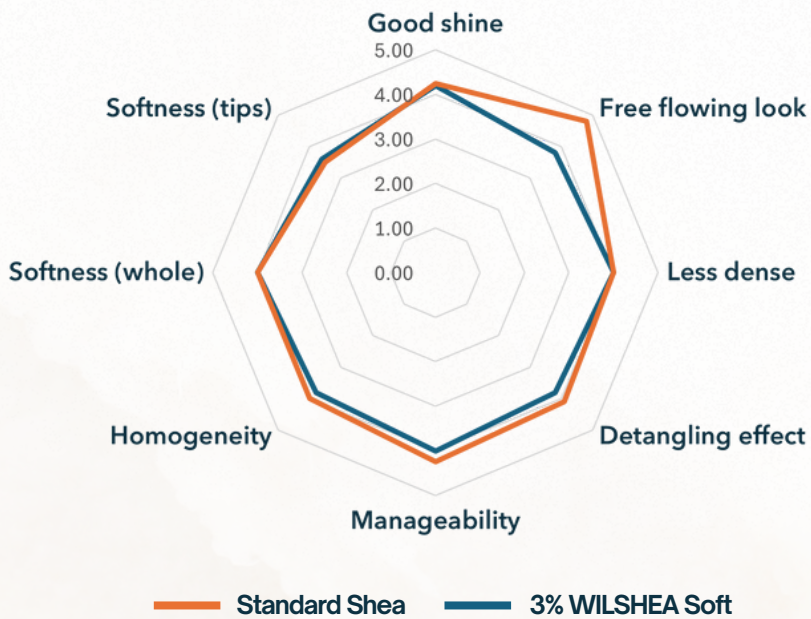


WILSHEA Soft

Enhanced Sensory Balance

In sensory evaluations of hair oil formulations, **WILSHEA Soft** elevated overall sensorial harmony, creating a smoother, more homogeneous appearance with enhanced shine, balanced texture, and effortless detangling for a free-flowing finish.

Hair Sensory Performance Profile



Visible Results, Minimal Input

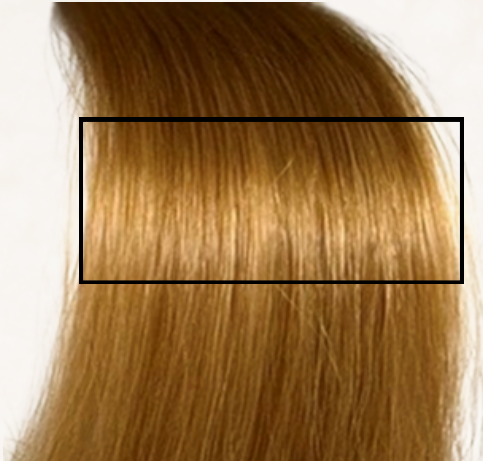
At low inclusion levels (1–3%), **WILSHEA Soft** enhanced overall sensorial feel, leaving hair smoother, lighter, and easier to style.

Stability and Crystallization

With **WILSHEA Soft**, no recrystallization occurs, allowing formulations to remain clear and stable even at low temperatures.

Standard Shea

3% WILSHEA Soft



WILFARIN FA-1895 (S)

INCI: *Stearic Acid*

WILSHEA FA-1895 (S) is a fine powder stearic acid derived from shea butter. Serving as an emulsifier, it provides a creamy, moisturizing texture that elevates the sensorial profile of lotions, moisturizers, soaps, shaving creams, and makeup.

WILSHEA FA-1895 (S) enhances formulation structure and stability, making it especially valuable in products where consistency and texture are critical.

Specifications



Appearance

Fine powdered white solid



Unsaponifiable Content

-

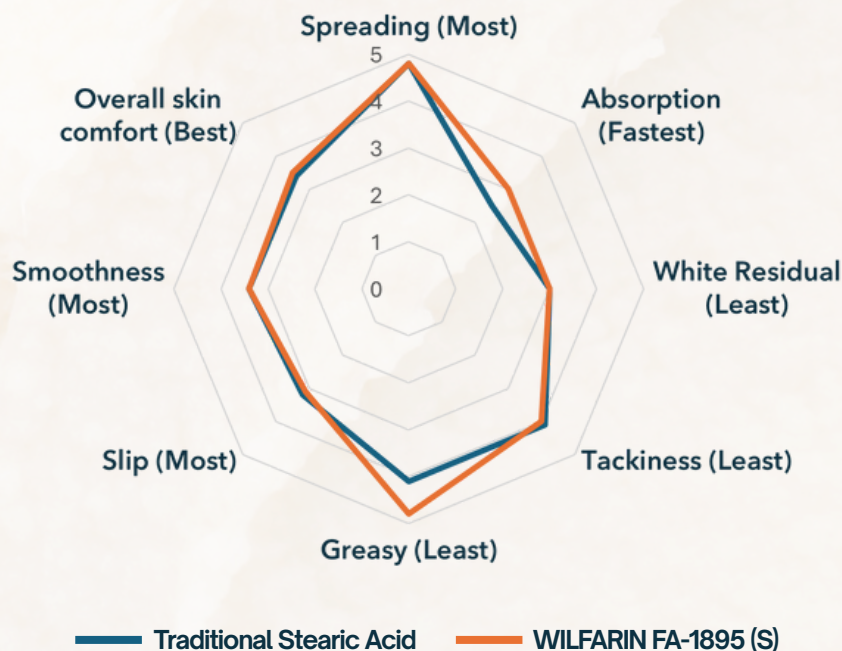


Shelf Life

2 years

Faster Absorption, Cleaner Feel

Blooming test results show **WILFARIN FA-1895 (S)** absorbs quickly with a short play time, leaving skin less greasy and more comfortable. Compared to palm-based stearic acid, it offers a smoother, fast-drying sensory profile that enhances product aesthetics.



WILFARIN FA-1895 (S)

Formulation Highlight

Moisture Restoring Night Cream

INGREDIENTS

TRADE NAME, Chemical Name	Formulation (%)	Function
Part A		
1. Water	qs	Solvent
2. WILFARIN USP-997, Glycerin	3.00	Humectant
3. Carbomer	0.30	Thickener
Part B		
4. ERCAWAX CE, Glyceryl Stearate Citarte	3.00	Emulsifier
5. WILSILK CS-110, Hydrogenated Soy Polyglyceride (and) C15-23 Alkane	1.00	Thickener
6. WILFARIN FA 1895 SA, Stearic acid	4.00	Co-emulsifier
7. WILFARESTER MCT, Caprylic/Capric Triglycerides	5.00	Emollient
8. WILFARESTER IPM, Isopropyl Myristate	5.00	
Part C		
9. 20% Sodium Hydroxide	0.56	pH Adjuster
10. Preservative	0.20	Preservative

Appearance: White opaque cream

pH: 6.0 - 6.5

Viscosity: : 9,000 - 10,000 mPa · s (10rpm, RV-5)

Stability: 50°C (1 month), 40°C (3 months), RTP – STABLE

BEAUTY RECIPE

1. Disperse the gum in glycerin before adding the water. Mix Part A until all powder are dispersed and dissolved in water.
2. Combine all ingredients in Part B.
3. Heat Part B to 80°C.
4. Heat Part A to 80°C.
5. Add Part B to Part A with continuous mixing.
6. Cool down with mixing. Then add the ingredients in Part C. Mix until the batch is homogenous.
7. Check the pH.



NATURE'S ORIGINS TO GLOBAL BEAUTY

Each **WILSHEA** grade represents a union of nature, science, and sustainability, carrying shea's timeless essence from its roots to beauty creators worldwide. Together, we craft formulations that begin with care and deliver performance with purpose.



Learn More About Our Personal Care Solutions

Sales & Technical Support

For more detailed product information, MSDS, samples, please contact your local Wilmar Sales Office or visit our global website at:

www.wilmar-international.com/oleochemicals

Asia Pacific, Middle East, and Africa

Wilmar International Limited (Headquarters)

Tel: +65 6216 0244

Mail: oleomarketing@wilmar.com.sg

ERCA Wilmar Cosmetic Ingredients S.r.l

Tel: +39 035 586411

Mail: info@it.erca-wilmar.com

Australia & New Zealand

Wilmar Ingredients AU

Tel: 1800878992

Mail: wilmar.ingredients.customerservice@au.wilmar-intl.com

Wilmar Ingredients NZ

Tel: 0800 800 617

Mail: customerservices@nzsugar.co.nz

China

Wilmar Oleo Co., LTD

Tel: +86 21 3119 9897

Mail: huangyihui@cn.wilmar-intl.com

India

AWL Agribusiness Limited

Tel: +91 90996 56790

Mail: Oleomarketing@adaniwilmar.in

Europe

Wilmar Europe Trading B.V.

Tel: +39 035 586411

Mail: weh-info@eu.wilmar-intl.com

North America

Wilmar Oleo North America LLC

Tel: +1 713 482 3981

Mail: wona-everybody@us.wilmar-intl.com



For samples and enquiries, HQ email:



Follow us on LinkedIn



DISCLAIMER: ALL INFORMATION, RECOMMENDATIONS OR SUGGESTIONS ARE PROVIDED BY WILMAR WITHOUT GUARANTEE OR WARRANTY, EXPRESS OR IMPLIED. WILMAR EXPRESSLY DISCLAIMS ANY IMPLIED WARRANTY OF MERCHANTABILITY, OF FITNESS FOR A PARTICULAR PURPOSE OR OF NONINFRINGEMENT OF THIRD-PARTY RIGHTS.

wilmar



*Sustainable Beauty,
From Multi-Plant Origins*

**wilmars**